

Sika Solution for IBS Wall Panels AAC ALC Blocks.pdf

SIKA PROJECT REFERENCE



RSKU PUNCAK BESTARI
@ SELANGOR



RSKU CYBER VALLEY
@ SELANGOR



THE CREST
@ PRINCE CHARLES
CRESCENT



SINGA HILL
@ JALAN SINGA

GLOBAL BUT LOCAL PARTNERSHIP



WE ARE SIKA

Sika is a specialty chemicals company with a leading position in the development and production of systems and products for bonding, sealing, damping, reinforcing and protecting in the building sector and the motor vehicle industry. Sika's product lines feature concrete admixtures, mortars, sealants and adhesives, structural strengthening systems, flooring as well as roofing and waterproofing systems.



SIKA SOLUTION FOR IBS WALL PANELS & AAC /ALC BLOCKS

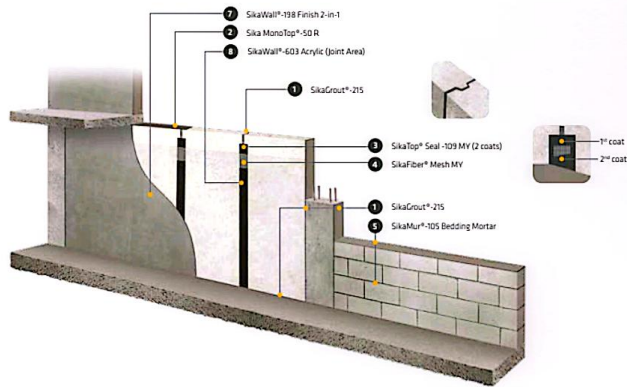
BUILDING TRUST



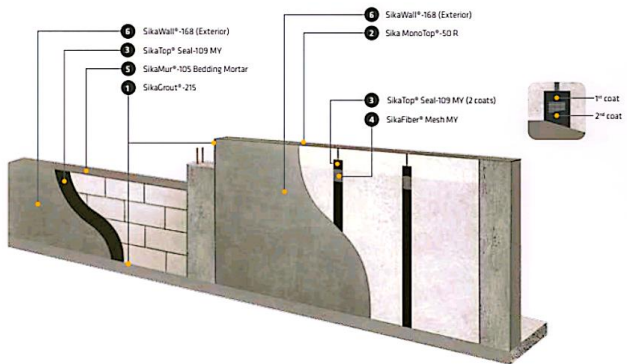
Sika Solution for IBS Wall Panels AAC ALC Blocks.pdf

IBS WALL PANELS & AAC/ALC BLOCKS SYSTEM SOLUTIONS

INTERIOR



EXTERIOR



SIKA MATERIAL FOR IBS WALL PANELS & AAC/ALC BLOCKS



1. SikaGrout*-215
SikaGrout*-215 Pumpable shrinkage compensated cementitious grout



2. Sika MonoTop*-50 R
General purpose, shrinkage controlled, fibre-reinforced patch repair mortar



3. SikaTop*-109 MY
Polymer-modified, flexible, cementitious waterproofing coating



4. SikaFiber* Mesh MY
High strength fibreglass alkali-resistant mesh fabric.



5. SikaMur*-105 Bedding Mortar
High performance cementitious-based adhesive mortar



6. SikaWall*-168 Plaster
High performance, cementitious render



7. SikaWall*-198 Finish 2-in-1
High performance, cementitious finish skimcoat



8. SikaWall*-603 Acrylic (Lanko 103)
Skim coat plus ready-to-use skim rendering coating



9. SikaHyflex*-140 Construction
Joint sealant for building joints



10. SikaCeram*-288 MY (C2TE S1)
C2TE S1 high performance, flexible cementitious tile adhesive



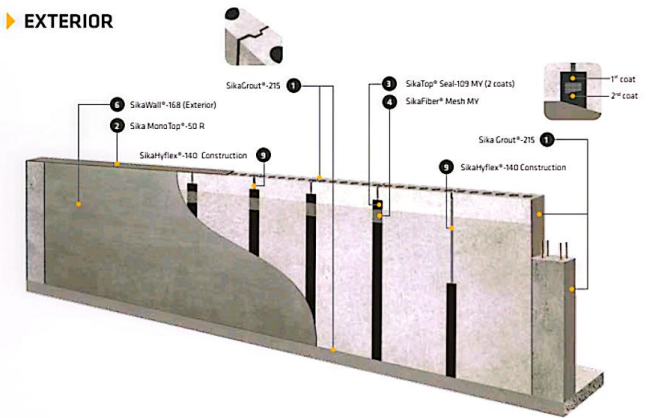
11. Sikalastic*-1 KMY
One component fiber reinforced, flexible cementitious waterproofing compound



12. DavcoGrout + Davco Grout Admix Plus RL 1000
Floor and wall grout joint filler

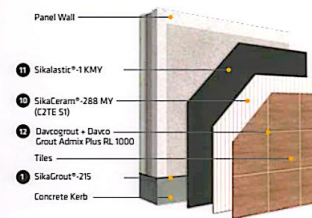
HOLLOW CORE PANELS SYSTEM SOLUTIONS

EXTERIOR



IBS WALL PANELS & AAC/ALC BLOCK WALL

WET AREA



Remarks:
* For application, please refer technical data sheets for more information.

AAC/ALC BLOCK

DRY AREA

